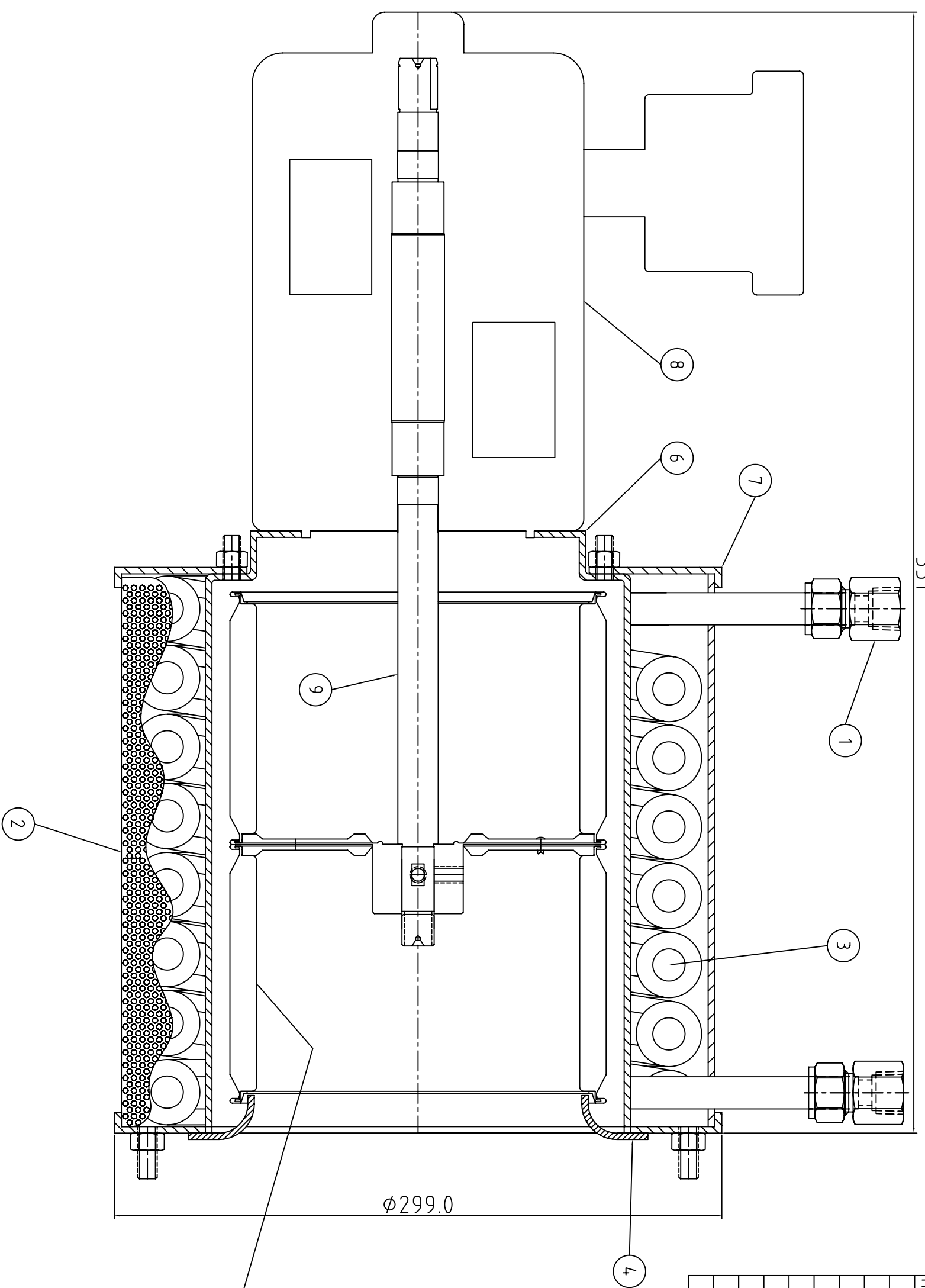


551



ITEM QTY	PART NO.	MATERIAL	DESCRIPTION
1	2	SS1010-7-8	316S/S FEMALE CONNECTOR
2	1	TC4223	STEEL PAINTED PERFORATED COVER
3	1	TC4207	304S/S FINNED COIL
4	1	TC4224	STEEL PAINTED BOTTOM COVER
5	1	TC4212	GAL STEEL FAN
6	1	TC4208	STEEL PAINTED FRAME
7	1	TC4210	STEEL PAINTED TOP COVER
8	1	SEE DESCRIPTION	CAST IRON ELECTRIC MOTOR
9	1	TC4260	K10 HT STEEL MOTOR SHAFT

ELECTRIC MOTOR DESCRIPTION
 CMG MODEL 0.55 KW 4 POLE D80 FRAME
 B 14 FLANGE ALL CG CAST IRON
 IP55 RATING WITH TC4260 EXTENDED SHAFT

NOTE: LINES TO TERMINALS U, V, & W 1
 FOR CORRECT ROTATION, AIR FLOW IN FROM
 TOP AND BOTTOM, OUT FROM SHROUD ITEM 2

NOTE:
 COOLER IS MOUNTED VERTICAL, MOTOR AT TOP
 INSURE COOLER FULLY VENTED PRIOR TO OPERATION

FLUID	PUMP MAKE	AIR FIN COOLER
TEMP.		
VISC.		PUMP TYPE
VP		
SG		PUMP SIZE
SUCT. PRESS.		SER No.
DISC PRESS.		S/BOX No.
S/BOX PRESS.		ITEM No.
SPEED		PIPING PLAN

NOTES

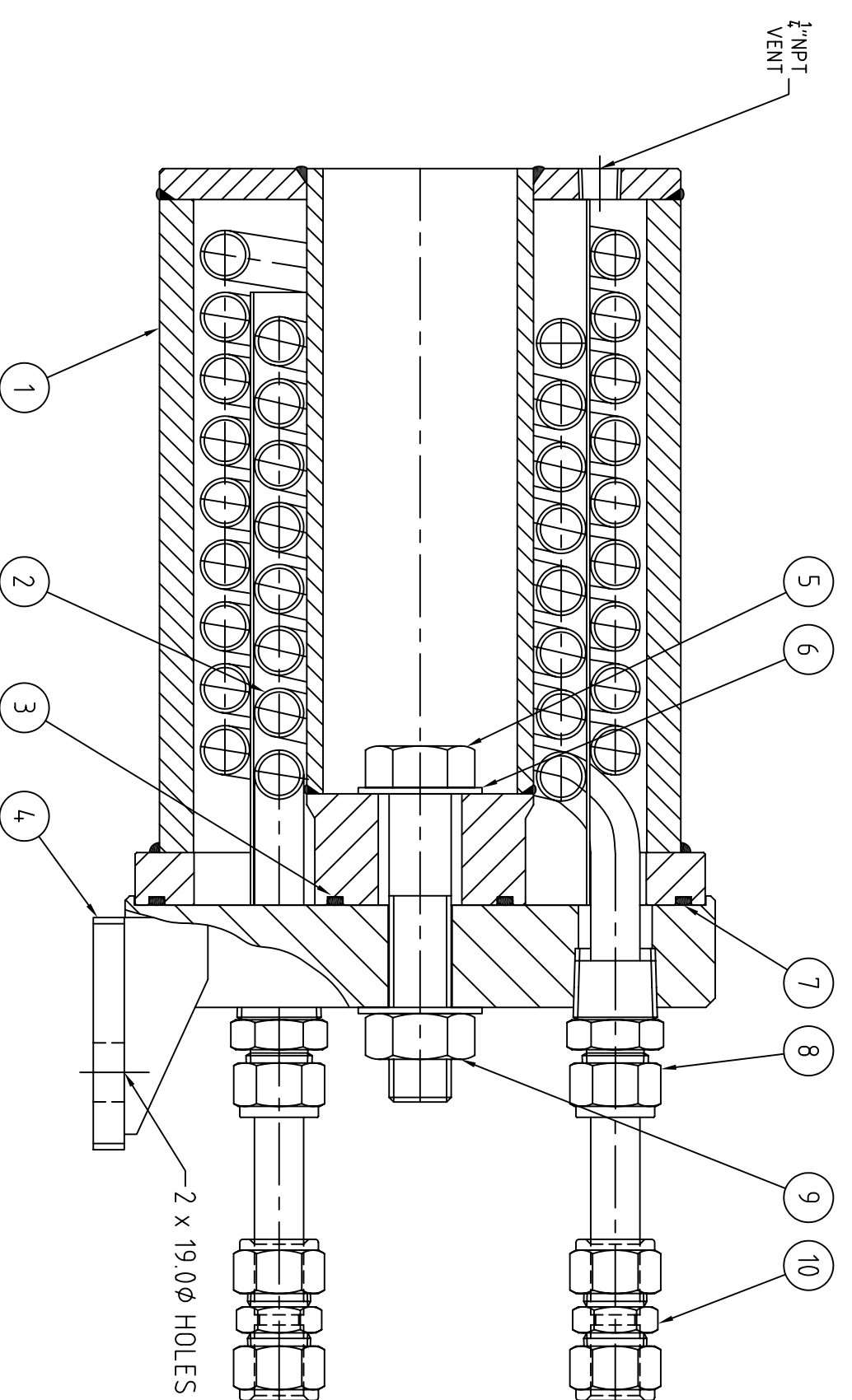
TRISEAL PTY LTD OWNS THE COPYRIGHT OF THIS DRAWING WHICH IS SUPPLIED IN CONFIDENCE AND WHICH MUST NOT BE USED FOR ANY PURPOSE OTHER THAN THAT FOR WHICH IT IS SUPPLIED AND MUST NOT BE REPRODUCED WITHOUT PERMISSION IN WRITING FROM THE OWNERS.

TRISEAL PTY LTD
 Protecting Industry and the Environment
 ACN 066 343 495
 UNIT 1, 41 PARAMOUNT DRIVE
 WANGARUA WA 6065
 Ph : 08 9302 3833
 Fx : 08 9302 2933
 EMAIL : triseal@triseal.com.au

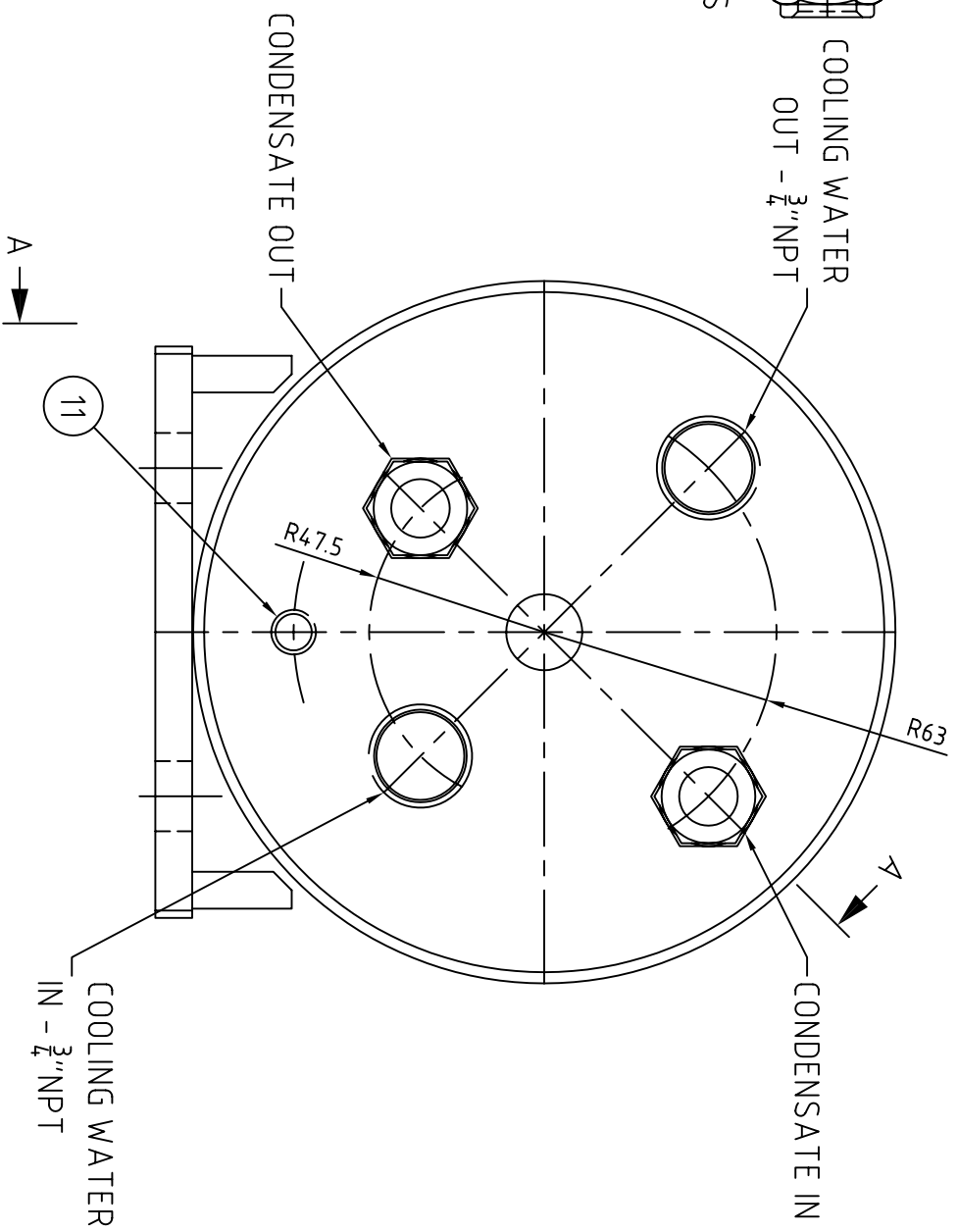
Quality System
 Quality Endorsed Company
 AS/NZS ISO 9001:2000
 OEC21393
 Standards Australia

DATE	16/07/2010	CUSTOMER	TRISEAL
CHECKED		END USER	
DRAWN	REILLY	SEAL CODE	AIR FIN COOLER
SCALE		TITLE	GENERAL ASSEMBLY
SHEET SIZE	A3	DRAWING NUMBER	TC4206 B
		REVISION	

BILL OF MATERIAL				
ITEM	DESCRIPTION	MATERIAL	PART NO	QTY UOM
1	MAIN HOUSING	316SS/DUPLEX 2205	TC3093	1 EA
2	COIL ASSEMBLY	316SS	TC3105	1 EA
3	PACKING RING	EPR	513 PR-227	1 EA
4	COVER PLATE	316SS/DUPLEX 2205	TC3104	1 EA
5	BOLT HEX HEAD	316S/S	3/4" X 4" BSW	1 EA
6	WASHER FLAT	316S/S	4.5 X 20 3.2THK	2 EA
7	PACKING RING	EPR	513 PR-260	1 EA
8	MALE CONNECTOR	316SS	SS-1010-1-12	2 EA
9	NUT HEX 3/4" BSW	316S/S	3/4" BSW	1 EA
10	UNION 3/8" TUBE x 3/8" TUBE	316SS	SS-1010-6	2 EA
11	PLUG HEX	316SS	1/4" NPT	1 EA



SECTION ON A-A



END ELEVATION

REV	DATE	EGN	SIGNED	SPEED
A	26/10/05		SEM	
1				

FLUID	PUMP MAKE	NOTES
TEMP.		TRISEAL PTY LTD OWNS THE COPYRIGHT OF THIS DRAWING WHICH IS SUPPLIED IN CONFIDENCE AND WHICH MUST NOT BE USED FOR ANY PURPOSE OTHER THAN THAT FOR WHICH IT IS SUPPLIED AND MUST NOT BE REPRODUCED WITHOUT PERMISSION IN WRITING FROM THE OWNERS.
VISC.	PUMP TYPE	
VP	PUMP SIZE	
SG	SER No.	
SUCT. PRESS.	S/BOX No.	
DISC PRESS.	ITEM No.	
S/BOX PRESS.	PIPING PLAN	

TRISEAL PTY LTD
 Protecting Industry and the Environment
 ACN 066 343 495
 UNIT 2/30 ACHIEVEMENT WAY
 WANGCARA WA 6065
 Ph : 08 9302 3833
 Fx : 08 9302 2933
 EMAIL : triseal@ca.com.au

DATE	CUSTOMER
26/10/05	TRISEAL
CHECKED	END USER
	VERIOUS
DRAWN	SEAL CODE
REILLY / SEM	
SCALE	TITLE
1:2	DUAL PASS COIL HEAT EXCHGR TYPE : S20-X10
SHEET SIZE	DRAWING NUMBER
A3	TC3348 A
REVISION	REVISION